

PROCESS 002

FLEXIBLE WATERPROOFING SYSTEM FOR DRYWALL COLD AREAS - WALLS



CONTENT

1. Documents Used
2. Purpose
3. References
4. Application Locations
5. Safety Equipment & Tools
6. Materials
7. Consumption
8. Initial Care
9. Surface preparation
10. Priming (Floor Only)
 - 10.1 Product Preparation for Priming (Floor Only)
 - 10.2 Main mode (Floor Only)
11. Waterproofing System Application
 - 11.1 Preparation Waterproofing Mixture
 - 11.2 Critical Point Treatment
12. Execution Mode Walls and Floors
13. Final Care
14. Technical support

1. DOCUMENTS USED

Product sheet Construcril Flex ;
Product sheet Construcril Trinca. .

2. PURPOSE

The purpose of Process 002 is to detail the application of Construcril® Flex® in cold drywall areas (walls and floors), in order to provide the training of the workforce and consequently to guarantee the desired results

3. REFERENCES

NBR 9574 – Waterproofing Execution;
NBR 16280 – Renovation of Buildings;
Drywall Systems Assembly Manual - Drywall Association

4. PLACES OF APPLICATION

- Drywall walls subject to moisture and / or water;
- Cold area floors with drywall closure;
- Balconies;
- Terraces;
- Floors in general;
- Slabs;
- Gutters

5. SAFETY EQUIPMENT AND TOOLS

- IPE - mandatory work + rubber glove;
- Drilling machine;
- Propeller / mixer;

- 2 "brush;
- 4 "brush;
- Sheep's wool brush or roller;
- Metal trowel or spatula;
- Stylus;



- Scissors;
- Roll of sheep's wool from below;
- Broom.

6. MATERIALS

- Construcril Flex;
- Construcril Trinca;
- Cement (CP II E 32 or CP II F 32) provided by the work;
- Polyester canvas - width 20 cm 1 x 1 mm mesh;
- Polyethylene Billet - Tarucel.

7. CONSUMPTION

- 250 g / m² per coat of Construcril Flex (masonry);
- 150 g / m² per coat of Construcril Flex (drywall);
- 70 g per linear meter of Construcril Trinca;
- 400 g (1 tube) to 6 linear meters of Construcril Trinca;
- Depending on substrate conditions, porosity (estimated).

8. INITIAL CARE

- The location of the waterproofing should preferably be on the positive pressure side;
- Joints must be provided with adequate spacing, with flat and parallel surfaces;
- Cavities or nests on the surface must be filled with cement mortar and volumetric trace sand (1: 3), with or without additives;
- The transit of personnel, material and equipment, foreign to the waterproofing process, during its execution must be forbidden;
- Correct any cracks, provided they are not structural, with PROCESS 017
- The drain pipe should be cut flush with the floor to allow it

PROCESS 002

FLEXIBLE WATERPROOFING SYSTEM FOR DRYWALL COLD AREAS - WALLS



to be covered with the waterproofing mixture

9. SURFACE PREPARATION

- Surfaces should be clean of dust, oil or grease, free of debris, iron spikes, loose particles, etc

10. PRINTING (ON FLOOR ONLY)

For better adhesion between substrate and waterproofing membrane, priming is recommended

10.1. PRODUCT PREPARATION FOR PRINTING (ON FLOOR ONLY)

- Dilute Construcril Flex in clean water 1: 4 (Construcril Flex: Water);
- This water must be clean and free of impurities.

10.2. PRINTING MODE (ON FLOOR ONLY)

- Apply priming to any area to be waterproofed;
- Apply priming to critical points: drains and baseboards

11. WATERPROOFING SYSTEM APPLICATION

11.1. PREPARATION WATERPROOFING MIX

- Mechanically mix Construcril Flex with cement (CP II E 32 or CP II F 32) in stroke 1: 1 (Construcril Flex: cement) with drill with attached mixer until no lumps are present in the mix;
- Note: POT-LIFE (mixing time): Prepare the amount of mixture for use within 120 minutes.

11.2. TREATMENT OF CRITICAL POINTS

BASEBOARDS

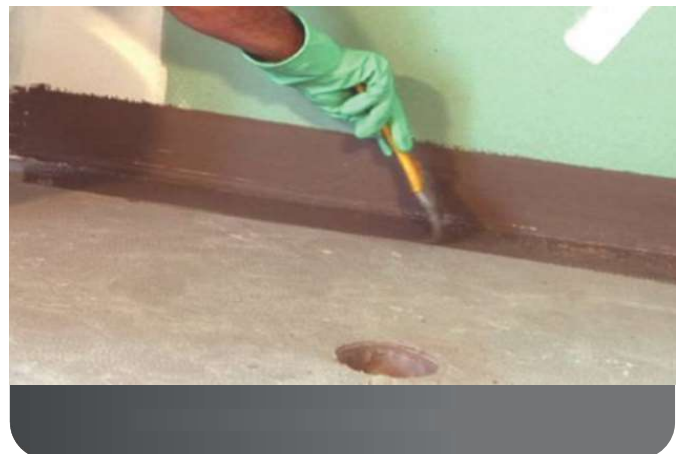
- Apply the Polyethylene Billet (Tarucel) in the space between the plate and the floor, in all its extension;
- Apply Construcril® Trinca mastic sealant to the full length of the skirting board;
- Apply the first coat of the waterproofing mixture on the baseboard area: 10 cm on the floor and 10 cm on the wall with the 4 "brush;
- Apply polyester mesh - width 20 cm 1 x 1 mm mesh, so that it is perfectly stretched and centered, ensuring the coverage and flatness of the entire length treated. The screen should be 10 cm on the floor and 10 cm on the wall. To fix the screen, apply another coat of waterproofing mixture on the screen evenly the surface. In sharp corners the screen should be cut and overlapped;
- Apply the brush mixture to the footer area: 10 cm on the floor and 10 cm on the wall;
- Note: POT-LIFE (mixing time): Prepare the amount of mixture for use within 120 minutes.

DRAINS

- Apply the priming on the floor around the drain approximately 40 cm from the center and wait until it reaches a wet-dry state (approximately 30 minutes);
- Apply the waterproofing mixture on the floor around the drain (40 cm from the center);
- Cut the polyester fabric to a size that exceeds the drain by about 40 cm, place it centered over the drain, cut the cross-shaped fabric, then x-shaped, fold the fabric into the drain.
- Apply two more coats of waterproofing mixture on the screen evenly the surface, apply on the inside of the drain, where the screen was turned;
- Note: POT-LIFE (mixing time): Prepare the amount of mixture for use within 120 minutes.

12. WALL AND FLOORING MODE

- After treating the critical points, apply three cross coats throughout the area to be waterproofed;



PROCESS 002

FLEXIBLE WATERPROOFING SYSTEM FOR DRYWALL COLD AREAS - WALLS



- One can use brush, sheepskin roller or brush of 4;
- Always respect the cure between coats which is 40 to 90 minutes at 25°C and 50% relative humidity;
- Note: POT-LIFE (mixing time): Prepare the amount of mixture for use within 120 minutes.

13. FINAL CARE

- After the waterproofing is performed, it is recommended to perform a water depth load test, with a minimum duration of 72 h to verify the application of the system used according to NBR 9574/1986;
- With Construcril® Flex® you should take the usual chemical care;
- Good ventilation of the work area;
- Use of work clothes and gloves to protect the skin;
- Wash with clean water;
- After application, clean tools before product hardens.

14. TECHNICAL SUPPORT

The information contained in this data sheet is accurate and based on our tests, scientific knowledge and on-site evidence. Strict quality control and reputable suppliers guarantee the integrity of our products. Construcril® has qualified professionals to provide all technical support and training in the application of our products. We assume no responsibility for misapplied products. For more information contact our technical department

