

PROCESS 001

WATERPROOFING SYSTEM FLEXIBLE FOR COLD AREAS



CONTENT

1. Documents Used
2. Purpose
3. References
4. Application Locations
5. Safety Equipment & Tools
6. Materials
7. Consumption
8. Initial Care
9. Surface preparation
10. Priming
 - 10.1 Product Preparation for Priming
 - 10.2 Prime mode
11. Waterproofing System Application
 - 11.1 Preparation Waterproofing Mixture
 - 11.2 Critical Point Treatment
 - 11.3 Execution Mode Walls and Floors
12. Final Care
13. Technical support

1. DOCUMENTS USED

CONSTRUCRIL FLEX PRODUCT SHEET

2. PURPOSE

The purpose of Process 001 (Flexible Waterproofing System for cold areas) is to detail the application of Construcril® Flex® in cold areas, so as to provide manpower training and therefore ensure the impermeability of the areas.

3. REFERÊNCIAS

NBR 9574 – Waterproofing Execution.

4. LOCAIS DE APLICAÇÃO

- § Box;
- § BWC;
- § Water boxes;
- § Balconies;
- § Terraces;
- § Floors in general;
- § Slabs;
- § Gutters;
- § Ruffles.

5. SAFETY EQUIPMENT AND TOOLS

- § IPE mandatory work + rubber glove
- § Drilling machine;
- § Propeller / Mixer;
- § 2 "brush;
- § 4 "brush;



- § Sheep's wool brush or roller;
- § Metal trowel or spatula;
- § Stylus;
- § Scissors;
- § Roll of sheep's wool from below;
- § Broom.

6. MATERIALS

- § Construcril® Flex®;
- § Cement (CP II E 32 or CP II F 32) provided by the work;
- § Polyester canvas - width 15-20 cm 1 x 1 mm mesh;

7. CONSUMPTION

- § 250 g / m² per coat, depending on substrate conditions, porosity (estimated).

8. INITIAL CARE

- § The location of the waterproofing should preferably be on the water pressure side;
- § Joints must be provided with adequate spacing, with flat and parallel surfaces;
- § Cavities or nests on the surface must be filled with cement mortar and volumetric trace sand (1: 3), with or without additives;
- § The transit of personnel, material and equipment foreign to the waterproofing process during its execution must be forbidden;
- § Correct any cracks, provided they are not structural, in accordance with CASE 017. The drain pipe must be cut flush with the floor so as to allow it to be covered with the waterproofing mixture.

9. SURFACE PREPARATION

- § Surfaces should be clean of dust, oil or grease, free of debris, iron spikes, loose particles, etc.

PROCESS 001

WATERPROOFING SYSTEM FLEXIBLE FOR COLD AREAS



10. PRINTING

§ For better adhesion between the substrate and the waterproofing membrane, the application of priming is recommended.

10.1. PRODUCT PREPARATION FOR PRINTING

- § Dilute Construcril® Flex® in clean water 1: 4 (Construcril Flex: Water); This water must be clean and free of impurities;
- § Esta água deve ser limpa e livre de impurezas;

10.2. PRINTING IMPLEMENTATION

- § Apply the priming in every area to be waterproofed, including the critical points: drains and baseboards.

11. WATERPROOFING SYSTEM APPLICATION

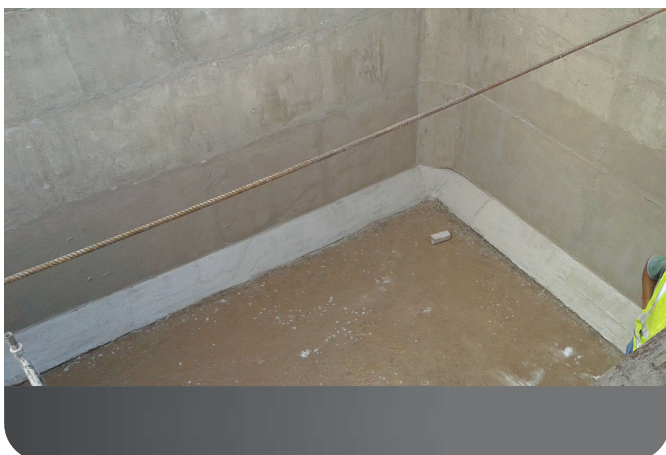
11.1. PREPARATION WATERPROOFING MIX

- § Mechanically mix Construcril® Flex® with cement (CP II E 32 or CP II F 32) in stroke 1: 1 (Construcril® Flex®: cement) with drill with attached mixer until no lumps are present in the mix;
- § Note: POT-LIFE (mixing time): Prepare the amount of mixture for use within 120 minutes

11.2. TREATMENT OF CRITICAL POINTS

BASEBOARD

- § After requesting priming, wait for the wet-dry state (30 minutes)
- § Apply a first coat of the waterproofing mixture over a baseboard area: 10 cm without floor and 10 cm on the wall with the 4" brush;
- § Apply polyester canvas - width 20 cm for drywall mesh 1 x 1 mm, so that it is perfectly stretched and centered, ensuring the coverage and flatness of the entire length



treated. The screen should be 10 cm on the floor and 10 cm on the wall. For fixing the screen, another coat of waterproofing mixture is applied on it, making the surface even. In sharp corners the screen should be cut



and overlapped;

- § Apply the brush mixture to the footer area: 10 cm for masonry on the floor and 30 cm on the wall;
- § Note: POT-LIFE (mixing time): Prepare the amount of mixture for use within 120 minutes.

DRAINS

- § Apply the waterproofing mixture on the floor around the drain (40 cm from the center)
- § Cut the polyester canvas to a size that exceeds the drain by about 40 cm, place it centered over the drain, cut the cross-shaped canvas, then x-shape, fold the canvas into the drain;
- § Apply two more coats of waterproofing mixture on the screen to even out the surface, including the inside of the drain where the screen was turned;
- § Note: POT-LIFE (mixing time): Prepare the amount of mixture for use within 120 minutes.

11.3. WALL AND FLOORING MODE

- § After treating the critical points, apply three cross coats throughout the area to be waterproofed;
- § You can use a brush, a sheepskin roller or a 4" brush;
- § Always respect the cure between coats which is 40 to 90 minutes at 25°C and 50% relative humidity;
- § Note: POT-LIFE (mixing time): Prepare the amount of mixture for use within 120 minutes.

PROCESS 001

WATERPROOFING SYSTEM FLEXIBLE FOR COLD AREAS



13. FINAL CARE

- § After the waterproofing is performed, it is recommended to carry out a water depth load test, with a minimum duration of 72h to verify the application of the system used according to NBR 9574/1986;
- § With Construcril® Flex® you should take the usual chemical care;
- § Good ventilation of the work area;;
- § Use of work clothes and gloves to protect the skin;
- § Wash with clean water;
- § After application clean the tools before the product hardens

14. TECHNICAL SUPPORT

The information contained in this data sheet is accurate, based on our tests, scientific knowledge and proof of work. Strict quality control and reputable suppliers guarantee the integrity of our products. Construcril® has qualified professionals to provide all technical support and training in the application of our products. We assume no responsibility for misapplied products. Contact. For more information, contact our technical department.